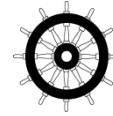


TEAMTEC INCINERATORS

Market leaders since 1972 - More than 11 000 units sold worldwide



MED APPROVED



GS500CS with a sluice for continuous feeding of solid waste.
Capacity: 850 kW

TEAMTEC Incinerator model GS500CS

The **GS500CS** is one of the most effective marine incinerators on the market today. The model is available with manual or automatic feeding of solid waste and full automatic sludge burning.

COMPACT DESIGN

The TEAMTEC high capacity incinerator models have one of the world's **smallest footprints and overall size**. The incinerators can easily be installed in a corner.

Our incinerators are made from high quality marine components only.

AUTOMATIC CONTROL

TEAMTEC incinerators are all controlled by a state-of-the-art PLC ensuring a **simple and reliable operation, maximum capacity utilisation and minimum fuel consumption**.

LOW OPERATION COSTS

Our unique high temperature cyclone burning principle ensures that all the incinerators in TEAMTEC product range can incinerate sludge oil (waste oil) with water content up to 50% without using support fuel, leaving our incinerators as one of the most **economical** incinerators on the market.

TEAMTEC incinerators have **no strainers or filters** in the sludge oil system and this in addition to several other advantages keeps the maintenance costs to an absolute minimum.

MODULAR CONSTRUCTION

All our incinerators are of a **modular construction** and can, if required, be delivered as a flat-packed unit for assembling onboard the vessel/installation – no parts are bigger than a normal ship door. No welding is needed.

This construction also benefits the life-time maintenance works.

Minimum attendance is needed during operation and remote supervision is possible.

TECHNICAL DATA – GS500C model:

Version:	CS	CSW	CGSW ⁽¹⁾	CIS*	CIC ⁽²⁾
Calorific capacity:	731 000 kcal/h 850 kW	731 000 kcal/h 850 kW	731 000 kcal/h 791 kW	775 000 kcal/h 850 kW	800 000 kcal/h 930 kW
Sludge oil capacity **:	100 l/h	N/A	N/A	120 l/h	105 l/h
Bilge water capacity:	N/A	N/A	N/A	153 l/h	N/A
Solid waste capacity:	50-135 kg/h	50-135 kg/h	60-150 kg/h	50-135 kg/h	50-135 kg/h
Feeding sluice:	Yes	Yes	Yes	Yes	Yes

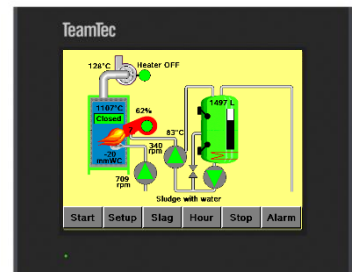
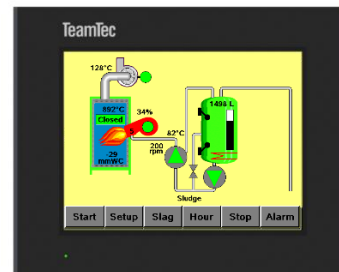
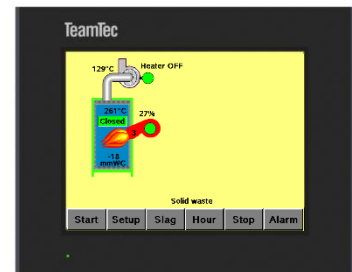
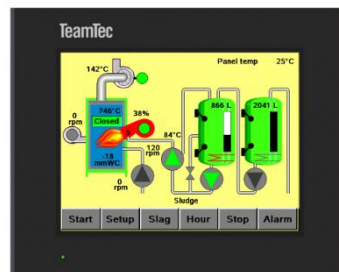
* With TEAMTEC water injection system. ** IMO-defined sludge oil, 20% water content. (1) With stirrer. (2) CIC is our high capacity version.

ALL VERSIONS:

All versions (except CSW) burn simultaneously sludge oil and solid waste.

TEAMTEC incinerators are designed and certified in compliance with the IMO resolution MEPC 244 (66) and IMO MARPOL ANNEX VI.

PLC colour touch screen panel as standard:



OPTIONS:

- Auto **waste feeding system** (CFGSW) with a hopper, a shredder and a feeding screw, see separate brochure.
- Skid/base mounted units
- Containerized units
- Remote control panel / slave panel
- Sludge oil and diesel oil tanks
- Diesel oil transfer and booster pumps
- Sludge tank level indicator in operator display
- Heat tracing control for the sludge circulation line
- Frequency controlled flue gas fan
- Flue gas stack components
- Solutions for ambient temp. above 55°C
- Project versions

BILGE WATER INJECTION:

As an option the incinerator can be equipped with TEAMTEC bilge water injection system to reduce the load on the Oily Water Separator by utilizing the heat from the sludge oil combustion. No additional diesel oil consumption. With PLC controlled injection of the water you achieve:

- Safe disposal of contaminated water
- Increased sludge capacity (ref. table)
- Reduced NO_x emission - *** verified by DNV

Bilge Water Injection is approved by major classification societies.

Quick and simple upgrading of existing TEAMTEC incinerators available.