

01B Skimmers - Suction

Weir skimmer LWS 500 Suction - 213366



The self-adjusting weir skimmer LWS 500 gives the operator precise control of the skimming process and offers a high recovery capacity in all operating conditions.

The LWS is equipped with a 3" female Camlock quick connector for connection to a suction pump or vacuum system.

Optionally the LWS 500 weir skimmer can be fitted with a powerful hydraulically driven Lamor Archimedes screw pump which can efficiently recover and pump a wide range of oils from light products to the heaviest debris-laden emulsions or with a centrifugal oil transfer pump.

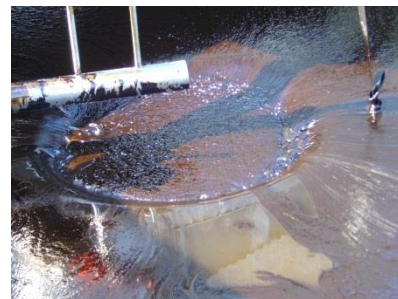
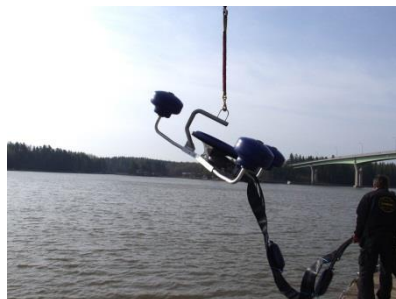
For the LWS 500 you can choose between GTA 20, 30, 50 or 70.

The optional Lamor GTA onboard transfer pump fitted to the LWS 500 is equipped with debris cutting knives and inlet water/steam injection ports as standard, providing a maximum capacity of 20 - 70 m³/hr accordingly up to a discharge pressure of 12 bar (174 Psi).

The LWS 500 is manufactured from marine grade aluminum and stainless steel with 3 specially designed polyethylene floats and a single central lifting point. The LWS 500 incorporates a large diameter free floating weir that gives it excellent wave following characteristics.

The LWS range of weir skimmers has been specifically designed to work with the wide range of Lamor suction and screw pumps.

The Lamor LWS 500 capacity has been tested and certified by Bureau Veritas.



TECHNICAL SPECIFICATIONS

Parameter/Type	LWS 500	LWS 500 GTA 20	LWS 500 GTA 30	LWS 500 GTA 50	LWS 500 GTA 70	
Pump type	-	GTA 20	GTA 30	GTA 50	GTA 70	
Length	2200					mm
Width	2300					mm
Height	790					mm
Diameter of weir	500					mm
Weight with Pump	54	79	80	103	103	kg
Draft	480					mm
Design capacity (w pump)	50	20	30	50	70	m ³ /h
Capacity, certified ASTM	70	70	70			m ³ /h

PRODUCT CONFIGURATIONS / OPTIONS

• Brush adaptor:	LBA-Q 500
• Pump:	none (suction)/ GTA 20/30/50/70

- Light-weight and self-adjusting provides precise control and high capacity in all conditions
- High buoyancy-to-weight ratio and low inertial mass guaranties excellent sea-keeping characteristics
- Manufactured using marine grade aluminum and stainless steel as well as specially designed polyethylene floats in order to provide many years of reliable service