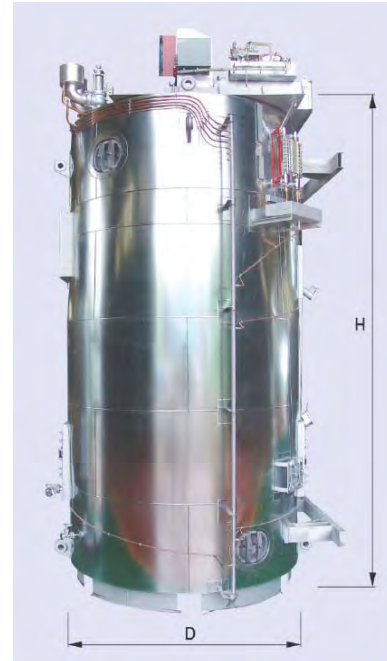


PRODUCT & SPECIFICATION (Marine division)



 **KANGRIM** HEAVY INDUSTRIES CO., LTD.

PB TYPE MARINE BOILER

■ Note.

1. Dimension : Boiler body (Excluding insulation)
2. Dry weight : Boiler body (Excluding water)
3. Working pressure : According to requirement

■ Dimension table

Type	Steam Capacity (ton/hr)	Working pressure (kg/cm ²)	Dimension (mm)		Dry weight (ton)
			D	H	
PB01	12	7.0/16.0	2,500	5,950	19.0
PB02	16	7.0/16.0	2,900	6,150	24.0
PB03	20	7.0/16.0	3,050	6,300	27.0
PB04	25	7.0/16.0	3,150	7,150	30.5
PB05	30	7.0/16.0	3,400	7,350	35.0
PB06	35	7.0/16.0	3,700	7,200	40.0
PB07	40	7.0/16.0	3,700	7,600	42.5
PB08	45	7.0/16.0	4,100	7,550	49.0
PB09	55	7.0/16.0	4,350	7,600	56.5

PRODUCT & SPECIFICATION (Marine division)



KANGRIM KANGRIM HEAVY INDUSTRIES CO., LTD.

PA TYPE MARINE BOILER

■ Note.

1. Dimension : Boiler body (Excluding insulation)
2. Dry weight : Boiler body (Excluding water)
3. Working pressure : According to requirement

■ Dimension table

Type	Steam Capacity (ton/hr)	Working pressure (kg/cm ²)	Dimension (mm)		Dry weight (ton)
			D	H	
PA01	1.6	7.0	1,600	3,700	7.1
PA02	2.5	7.0	1,800	3,900	8.6
PA03	3.0	7.0	1,950	4,350	10.1
PA04	4.0	7.0	1,950	4,550	11.0
PA05	5.5	7.0	2,200	4,850	14.0
PA06	6.5	7.0	2,200	5,100	14.8
PA07	8.0	7.0	2,300	5,550	18.2

PRODUCT & SPECIFICATION (Marine division)



 **KANGRIM** HEAVY INDUSTRIES CO., LTD.

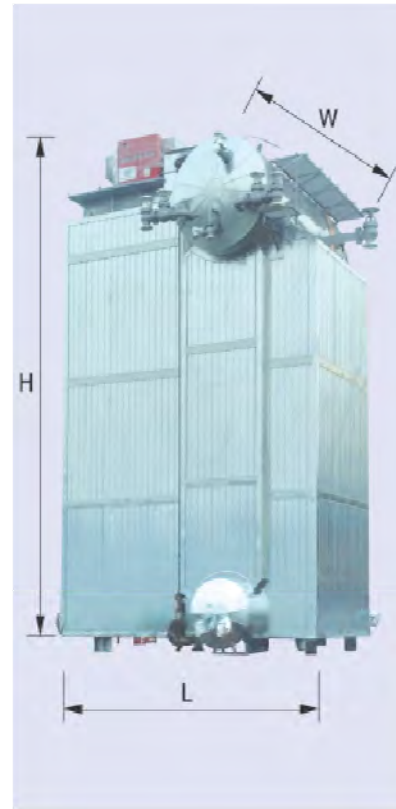
PC TYPE MARINE BOILER

■ Note.

1. Capacity : According to requirement
2. PC type : Oil fired and exhaust gas boiler
(Composite boiler)



PRODUCT & SPECIFICATION (Marine division)



KANGRIM KANGRIM HEAVY INDUSTRIES CO., LTD.

PD TYPE MARINE BOILER

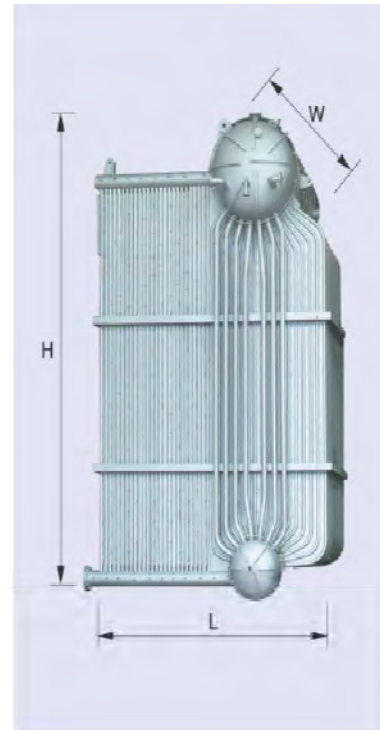
■ Note.

1. Dimension : Boiler body (Excluding insulation)
2. Dry weight : Boiler body (Excluding water)
3. Working pressure : According to requirement
4. Dimension(W) : Steam drum length
5. For other capacities, please contact us

■ Dimension table

Type	Steam Capacity (ton/hr)	Working pressure (kg/cm ²)	Dimension (mm)			Dry weight (ton)
			L	W	H	
PD01	25	16/22	3,960	3,900	6,950	36.8
PD02	35	16/22	4,340	4,270	7,400	42.0
PD03	45	16/22	4,590	4,540	8,300	50.9
PD04	55	16/22	4,590	4,540	9,200	54.6

PRODUCT & SPECIFICATION (Marine division)



KANGRIM KANGRIM HEAVY INDUSTRIES CO., LTD.

MD TYPE MARINE BOILER

Note.

1. Dimension : Boiler body (Excluding insulation)
2. Dry weight : Boiler body (Excluding water)
3. Working pressure : According to requirement
4. Dimension (W) : Steam drum length
5. For other capacities, please contact us

Dimension table

Type	Steam Capacity (ton/hr)	Working pressure (kg/cm ²)	Dimension (mm)			Dry weight (ton)
			L	W	H	
MD01	25	16/22	4,356	3,660	6,620	29.9
MD02	30	16/22	4,724	3,660	7,120	33.5
MD03	35	16/22	4,724	3,660	7,600	34.7
MD04	40	16/22	4,724	3,660	7,920	36.5
MD05	45	16/22	5,209	4,228	7,920	42.6
MD06	50	16/22	5,209	4,228	8,420	44.0
MD07	55	16/22	5,209	4,228	8,900	45.9

PRODUCT & SPECIFICATION (Marine division)



KANGRIM KANGRIM HEAVY INDUSTRIES CO., LTD.

MH TYPE MARINE BOILER

■ Note.

1. Dimension : Boiler body (Excluding insulation)
2. Dry weight : Boiler body (Excluding water)
3. Working pressure : According to requirement

■ Dimension table

Type	Steam Capacity (ton/hr)	Working pressure (kg/cm ²)	Dimension (mm)			Dry weight (ton)
			L	W	H	
MH01	1.6	7.0	3,576	2,200	2,460	5.4
MH02	2.5	7.0	3,776	2,450	2,700	6.9
MH03	3.0	7.0	3,828	2,550	2,784	7.6
MH04	4.0	7.0	4,578	2,750	2,984	10.2
MH05	5.5	7.0	4,730	2,950	3,186	12.4
MH06	6.5	7.0	5,230	3,100	3,345	14.3

PRODUCT & SPECIFICATION (Marine division)



KANGRIM KANGRIM HEAVY INDUSTRIES CO., LTD.

MS TYPE MARINE BOILER

■ Note.

1. Dimension : Boiler body (Excluding insulation)
2. Dry weight : Boiler body (Excluding water)
3. Working pressure : According to requirement

■ Dimension table

Type	Steam Capacity (ton/hr)	Working pressure (kg/cm ²)	Dimmension (mm)		Dry weight (ton)
			D	H	
MS01	0.5	7.0	1,142	1,900	2.2
MS02	1.0	7.0	1,405	2,305	3.5

PRODUCT & SPECIFICATION (Marine division)

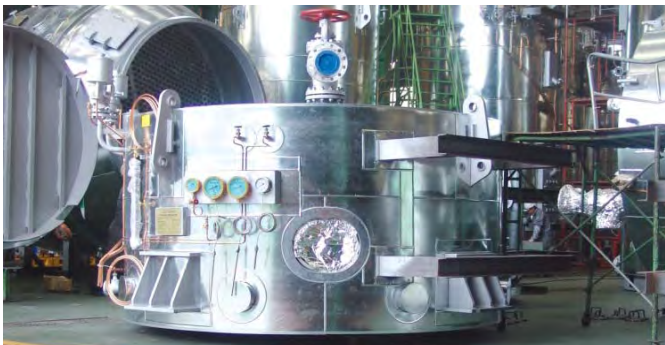


 **KANGRIM** HEAVY INDUSTRIES CO., LTD.

EA TYPE MARINE EXH. GAS BOILER

■ Note.

1. Capacity : According to requirement
2. EA type : Smoke tube, natural circulation with steam space



PRODUCT & SPECIFICATION (Marine division)

 **KANGRIM** HEAVY INDUSTRIES CO., LTD.

EM/EB TYPE MARINE EXH. GAS ECONOMIZER

■ Note.

1. Capacity : According to requirement
2. EM type : Water fin tube, forced circulation with steam space.
3. EB type : Somke tube, forced circulation without steam space.



PRODUCT & SPECIFICATION (Marine division)



 **KANGRIM** HEAVY INDUSTRIES CO., LTD.

SO_x SCRUBBER (EXHAUST GAS CLEANING SYSTEM)

■ Note.

1. Capacity : Up to 28,000m³/h

• Control panel for SO_x SCRUBBER



PRODUCT & SPECIFICATION (Marine division)



 **KANGRIM** HEAVY INDUSTRIES CO., LTD.

INERT GAS SYSTEM FOR TANKER (I.G.S)

■ Note.

1. Capacity : According to requirement



PRODUCT & SPECIFICATION (Marine division)



 **KANGRIM** HEAVY INDUSTRIES CO., LTD.

INERT GAS GENERATORS FOR TANKER (I.G.G)

■ Note.

1. Capacity : Up to 31,000m³/h



PRODUCT & SPECIFICATION (Marine division)



 **KANGRIM** HEAVY INDUSTRIES CO., LTD.

INERT GAS GENERATORS FOR LNG/LPG CARRIER (I.G.G)

■ Note.

1. Capacity : Up to 25,500m³/h



PRODUCT & SPECIFICATION (Marine division)

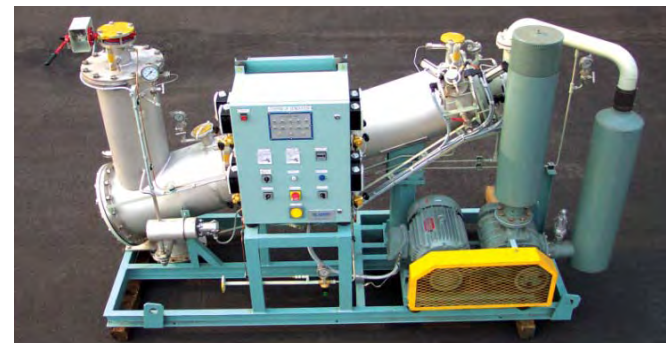


 **KANGRIM** HEAVY INDUSTRIES CO., LTD.

N₂ GENERATOR

■ Note.

1. Capacity : According to requirement



PRODUCT & SPECIFICATION (Marine division)



 **KANGRIM** HEAVY INDUSTRIES CO., LTD.

WASTE OIL INCINERATOR

■ Dimension table

Type	Capacity (Kcal/hr)	Dimmension (mm)			Weight (ton)
		L	W	H	
KFB-32	320,000	1,600	1,635	2,250	3.3
KFB-50	520,000	1,680	1,870	2,150	3.7
KFB-73S	730,000	1,910	2,120	2,250	4.0
KFB-110S	1,100,000	2,085	2,405	2,250	6.0
KFB-129	1,290,000	4,525	2,265	2,180	7.7

PRODUCT & SPECIFICATION (Marine division)



 **KANGRIM** HEAVY INDUSTRIES CO., LTD.

CALORIFIER

■ Dimension table

	Type	Storage Capacity (Liter)	Dimmension (mm)		Dry weight (kg)
			D	H	
Steam & Electric Type	LF 01	200	530	1,750	230
	LF 02	300	730	1,500	260
	LF 04	500	750	1,800	290
	LF 07	1,000	1,070	1,920	350
	LF 10	2,000	1,420	2,080	680

PRODUCT & SPECIFICATION (Marine division)

 **KANGRIM** HEAVY INDUSTRIES CO., LTD.

AIR RESERVOIR



PRODUCT & SPECIFICATION (Marine division)

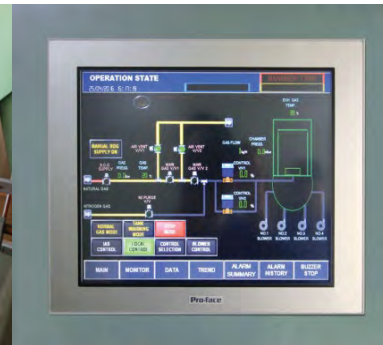


 **KANGRIM** HEAVY INDUSTRIES CO., LTD.

GAS COMBUSTION UNIT (G.C.U)

■ Note.

1. Capacity : Up to 9ton/h



PRODUCT & SPECIFICATION (Marine division)

 **KANGRIM** HEAVY INDUSTRIES CO., LTD.

CONTROL PANEL



PRODUCT & SPECIFICATION (Marine division)

 **KANGRIM** HEAVY INDUSTRIES CO., LTD.

CONTROL PANEL

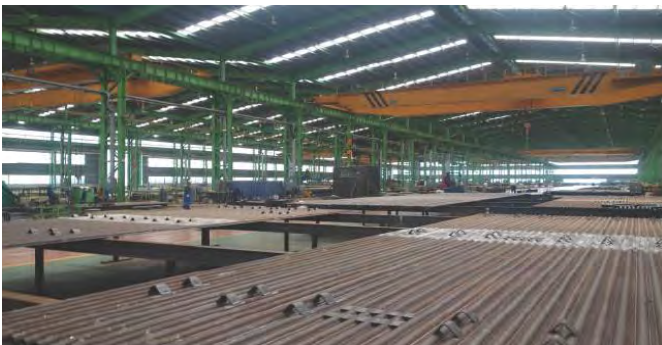


PRODUCT & SPECIFICATION (Plant / Offshore division)



 **KANGRIM** HEAVY INDUSTRIES CO., LTD.

**INDUSTRIAL, UTILITY
& PACKAGE BOILER**
PANEL, SUPERHEATER,
TUBES, HEADERS

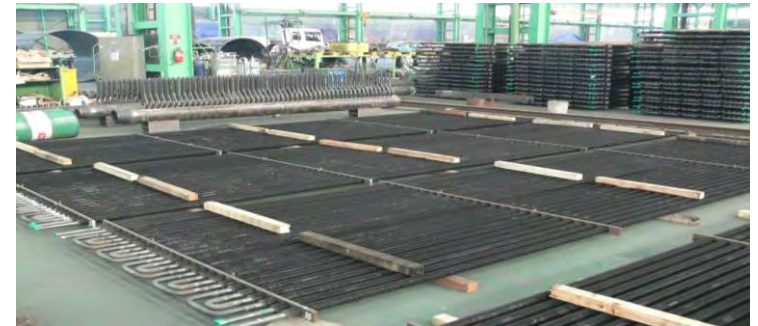


PRODUCT & SPECIFICATION (Plant / Offshore division)



 **KANGRIM** HEAVY INDUSTRIES CO., LTD.

**INDUSTRIAL, UTILITY
& PACKAGE BOILER**
PANEL, SUPERHEATER,
TUBES, HEADERS



PRODUCT & SPECIFICATION (Plant / Offshore division)



 **KANGRIM** HEAVY INDUSTRIES CO., LTD.

**INDUSTRIAL, UTILITY
& PACKAGE BOILER**
PANEL, SUPERHEATER,
TUBES, HEADERS

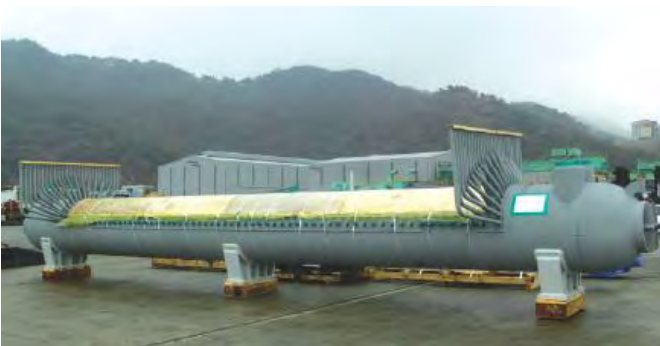


PRODUCT & SPECIFICATION (Plant / Offshore division)



 **KANGRIM** HEAVY INDUSTRIES CO., LTD.

**INDUSTRIAL, UTILITY
& PACKAGE BOILER**
STEAM DRUM, WATER DRUM
PIPING



PRODUCT & SPECIFICATION (Plant / Offshore division)



 **KANGRIM** HEAVY INDUSTRIES CO., LTD.

STEAM DRUM



PRODUCT & SPECIFICATION (Plant / Offshore division)



 **KANGRIM** HEAVY INDUSTRIES CO., LTD.

PRESSURE VESSEL



PRODUCT & SPECIFICATION (Plant / Offshore division)



 **KANGRIM** HEAVY INDUSTRIES CO., LTD.

PRESSURE VESSEL

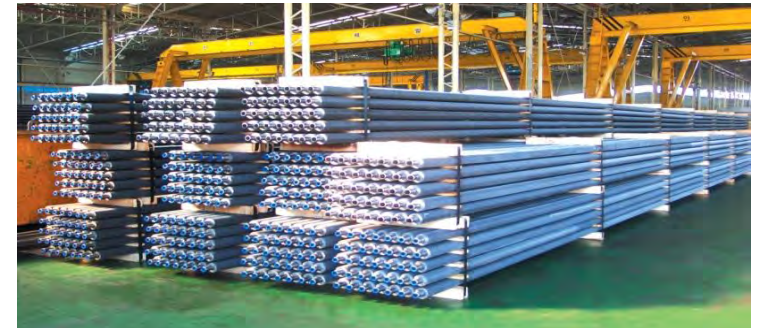


PRODUCT & SPECIFICATION (Plant / Offshore division)



 **KANGRIM** HEAVY INDUSTRIES CO., LTD.

H.R.S.G FIN TUBE



PRODUCT & SPECIFICATION (Plant / Offshore division)



 **KANGRIM** HEAVY INDUSTRIES CO., LTD.

HEAT RECOVERY SYSTEM GENERATOR (H.R.S.G)



PRODUCT & SPECIFICATION (Plant / Offshore division)

 **KANGRIM** HEAVY INDUSTRIES CO., LTD.

WASTE HEAT RECOVERY SYSTEM (W.H.R.S)



PRODUCT & SPECIFICATION (Plant / Offshore division)



 **KANGRIM** HEAVY INDUSTRIES CO., LTD.

WASTE HEAT RECOVERY UNIT (W.H.R.U)



PRODUCT & SPECIFICATION (Plant / Offshore division)



 **KANGRIM** HEAVY INDUSTRIES CO., LTD.

OFFSHORE EQUIPMENT



PRODUCT & SPECIFICATION (Plant / Offshore division)



 **KANGRIM** HEAVY INDUSTRIES CO., LTD.

**OFFSHORE
EQUIPMENT**
(BULK/MUD TANK)

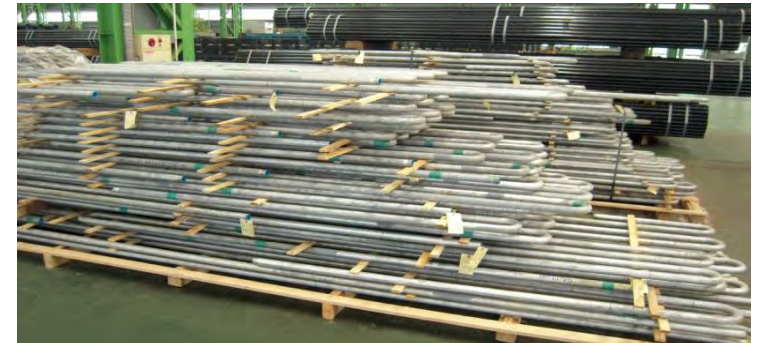


PRODUCT & SPECIFICATION (Plant / Offshore division)



 **KANGRIM** HEAVY INDUSTRIES CO., LTD.

OTHERS EQUIPMENT
HOOD, CAR DECK, DUCT,
KVOC, FITER MODULE,
COOLING COIL



PRODUCT & SPECIFICATION (Plant / Offshore division)

 **KANGRIM** HEAVY INDUSTRIES CO., LTD.

LPG/CO₂ TANK

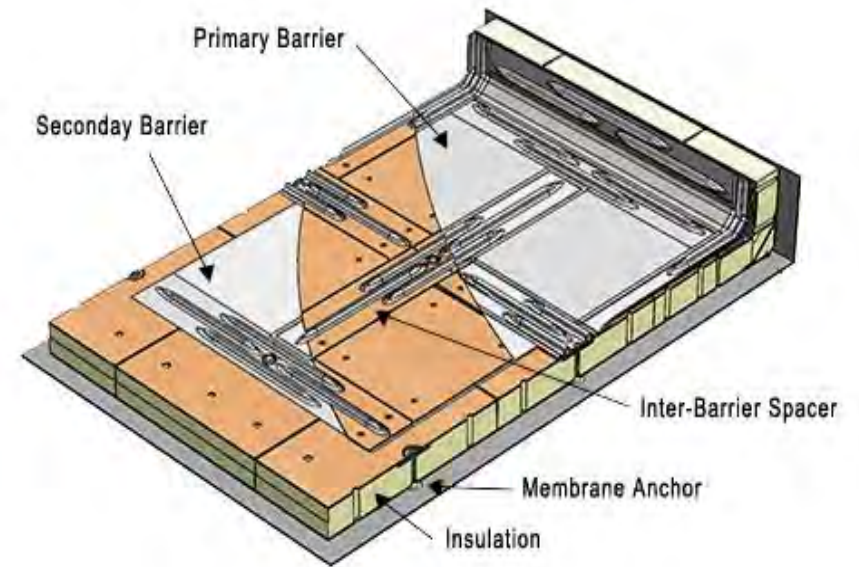
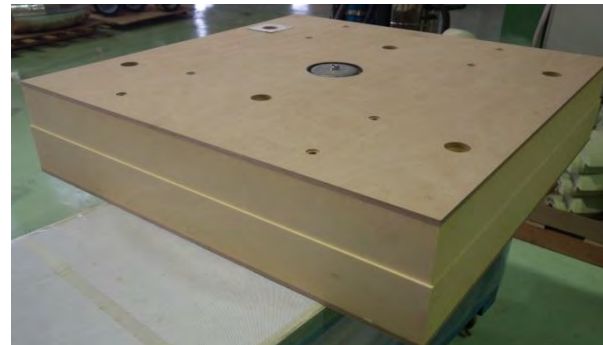


PRODUCT & SPECIFICATION (Insulation division)

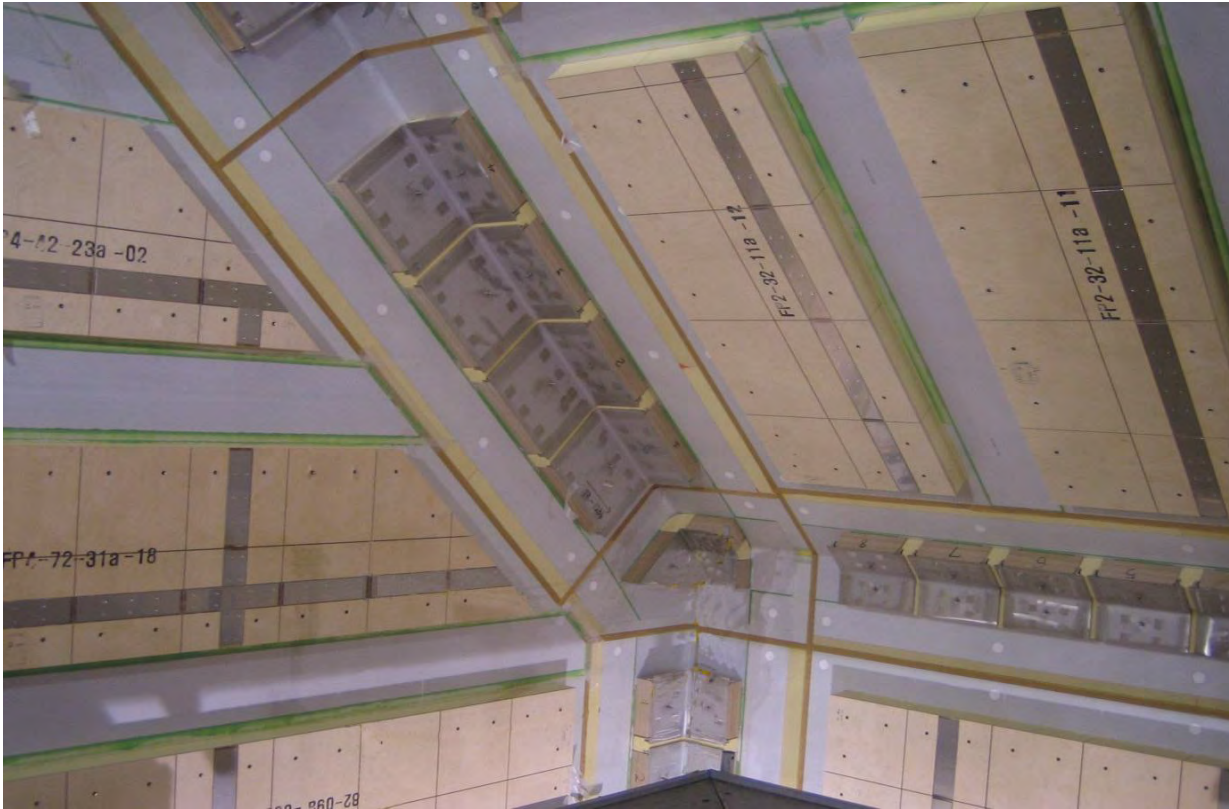


 **KANGRIM INSULATION CO., LTD.**

**LNG CARGO TANK
INSULATION**
KOGAS, KC-1 PANEL

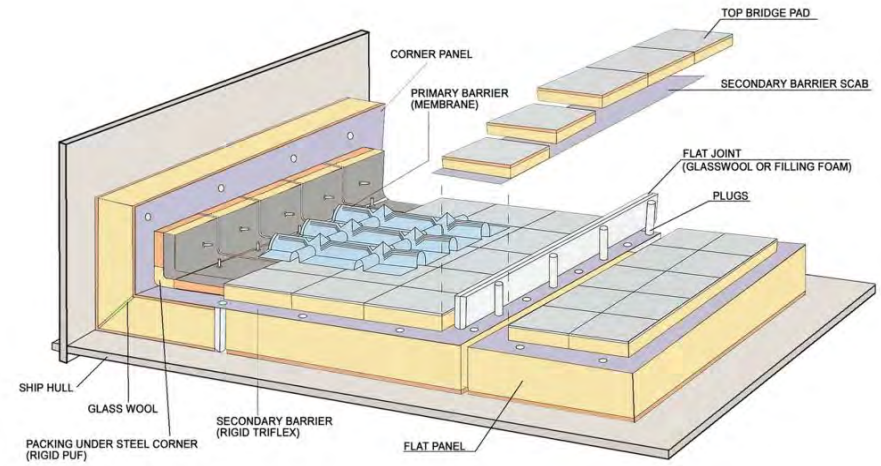


PRODUCT & SPECIFICATION (Insulation division)



 **KANGRIM INSULATION CO., LTD.**

LNG CARGO TANK INSULATION GTT, LNG MARK III PANEL



PRODUCT & SPECIFICATION (Insulation division)

 KANGRIM INSULATION CO., LTD.

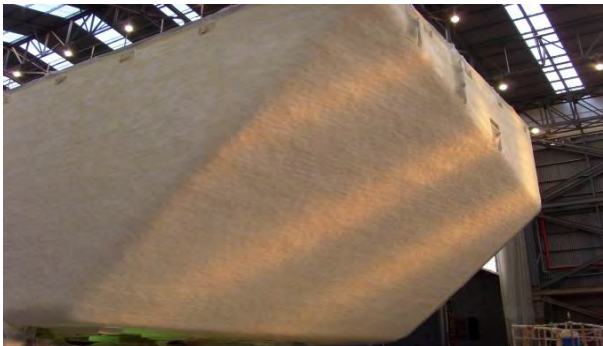
**LNG/LEG/LPG SHIP
TANK INSULATION
(PANEL)**



PRODUCT & SPECIFICATION (Insulation division)

 **KANGRIM** INSULATION CO., LTD.

**LNG/LEG/LPG SHIP
TANK INSULATION
(SPRAY)**



PRODUCT & SPECIFICATION (Insulation division)

 KANGRIM INSULATION CO., LTD.

**LNG/LEG/LPG SHIP
TANK INSULATION
(FOAM-IN-SITU)**

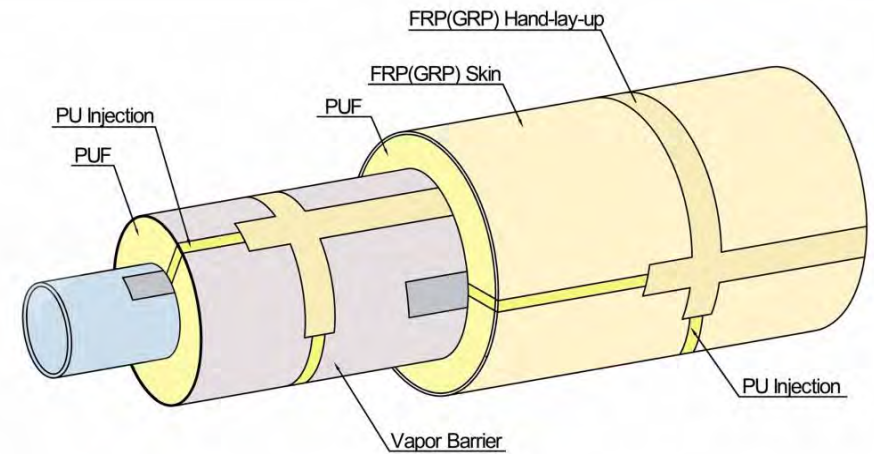


PRODUCT & SPECIFICATION (Insulation division)



 **KANGRIM** INSULATION CO., LTD.

LNG SHIP CARGO PIPE INSULATION

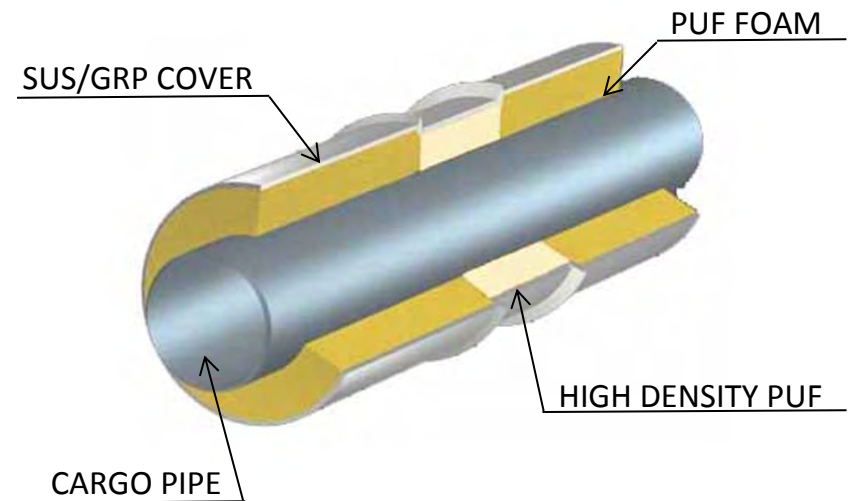


PRODUCT & SPECIFICATION (Insulation division)



 **KANGRIM** INSULATION CO., LTD.

LEG/LPG SHIP CARGO PIPE INSULATION



PRODUCT & SPECIFICATION (Insulation division)

 **KANGRIM** INSULATION CO., LTD.

**FLNG/OFFSHORE
TANK & PIPE INSULATION**



SHELL PRELUDE FLNG



PRODUCT & SPECIFICATION (Insulation division)

 **KANGRIM** INSULATION CO., LTD.

ONSHORE / PLANT
TANK & PIPE INSULATION

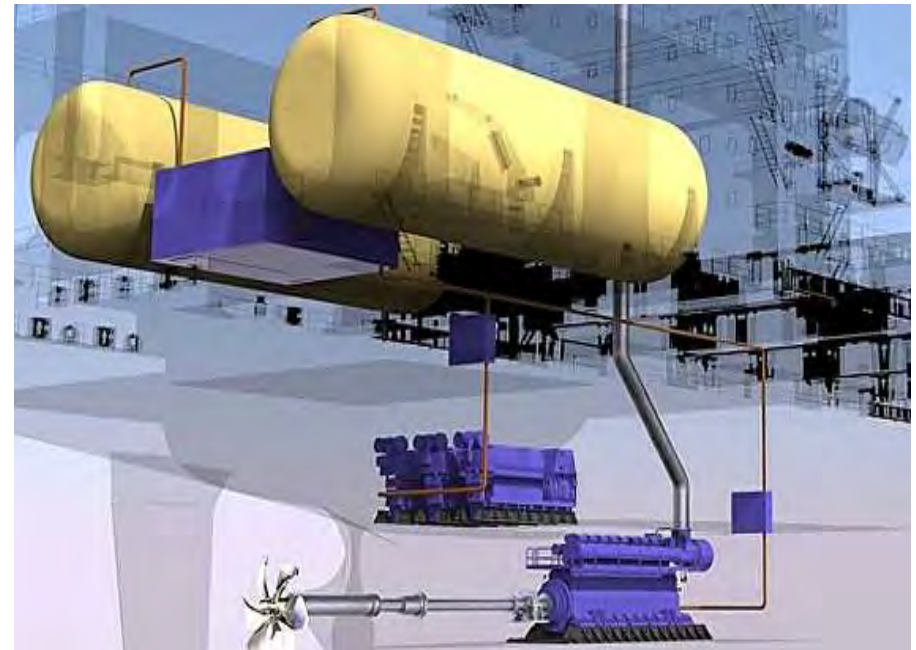


PRODUCT & SPECIFICATION (Insulation division)



 **KANGRIM** INSULATION CO., LTD.

**LNG FUEL TANK
BUNKER VESSEL
TANK & PIPE INSULATION**

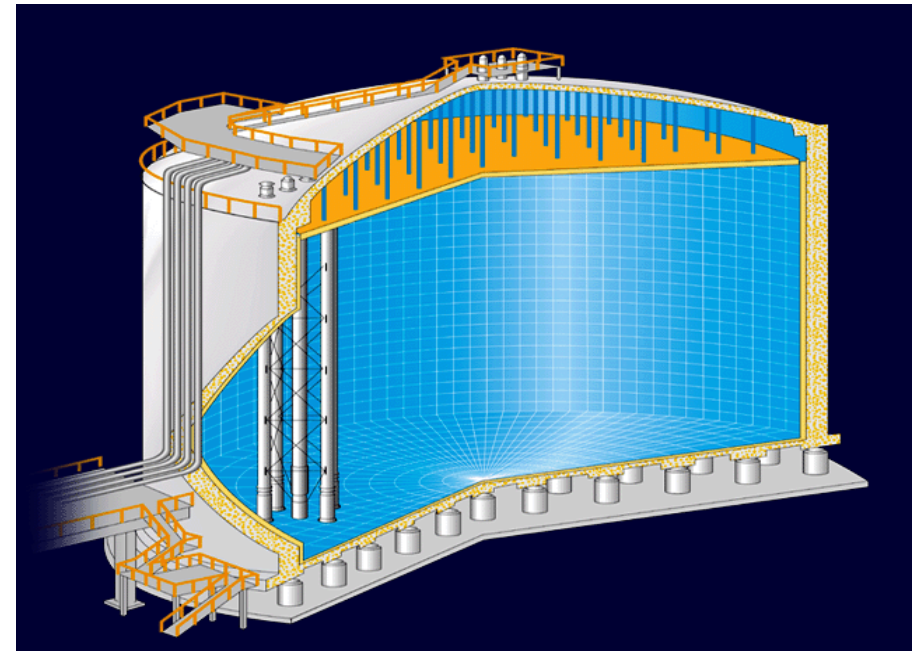
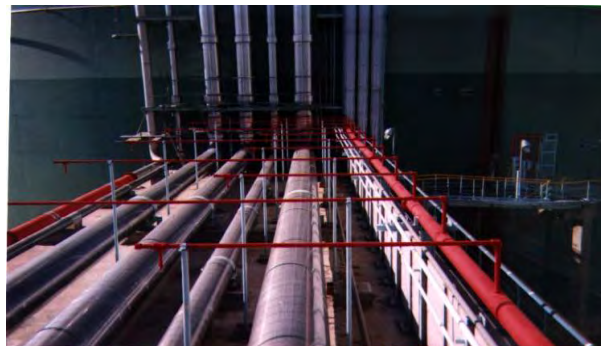


PRODUCT & SPECIFICATION (Insulation division)



 **KANGRIM** INSULATION CO., LTD.

**LNG RECEIVING
TERMINAL
TANK & PIPE INSULATION**



PRODUCT & SPECIFICATION (Insulation division)

 KANGRIM INSULATION CO., LTD.

COLD PROVISION STORE
FOR SHIP

