



RO-SWEEP - Single sweep systems

PROVEN OIL SPILL TECHNOLOGY

RO-SWEEP - Single sweep systems

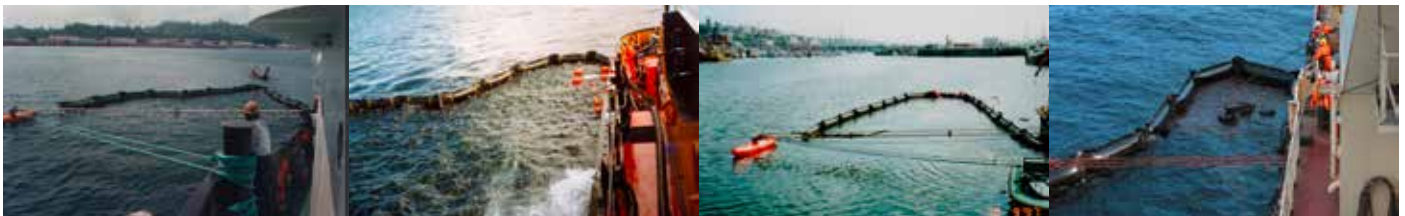
The RO-SWEEP system was originally developed for use in the harsh conditions of the North Sea to allow one vessel to conduct oil sweeping and recovery operations.

Many Maritime Authorities around the world, including Denmark, UK and Russia, now operate the RO-SWEEP. The RO-SWEEP is based on the RO-BOOM range of oil containment booms with an outrigger arm manufactured in robust galvanized steel.

These arms are available with an outrigger float. Alternatively the arm can be supported by the superstructure of the vessel.

As only one vessel is required for both the containment and recovery operation, the at sea response time is kept to a minimum.

The RO-SWEEP can be combined with any one of a number of skimmer options such as the TERMINATOR, RO-SKIM or SEAMOP hanging mop skimmer.



Advantages of RO-SWEEP:

- Single ship systems reduce response times
- RO-SWEEP systems can be enhanced with longer boom sections for increasing encounter rate with oil.
- Choice of skimmer systems.
- Available for all sizes of RO-BOOM with different sweep widths.
- Easy to operate
- Strong
- Takes very little storage space when not in operation
- Can be used with any skimmer type
- Rapid deployment
- Marine Grade Aluminium construction

TECHNICAL DATA

	RO-SWEEP 2000	RO-SWEEP 1500
Freeboard	0.60 m / 24 in	0.50 m / 20 in
Draught	1.10 m / 43 in	0.70 m / 28 in
Ballast/tension chain	13mm	13 mm
Reinforced chain attachment	Standard	Standard
Air chamber	4.5 m / 177 in	4.5 m / 177 in
Boom length	2 x 25 m / 82 ft	2 x 25 m / 82 ft
Boom Weight	18.0 Kg/m / 12 lbs/ft	15.0 Kg/m / 10 lbs/ft
Outrigger arm	10 or 15 m / 32 or 49 ft	10 or 15 m / 32 or 49ft

We can custom design single ship sweep systems to suit the recovery vessel and environmental conditions, please contact us.

Specialized RO-BOOM REELS are available to store, deploy and recover the boom wings.

For more information on Oil Spill Response systems, please visit www.desmi.com

DESMI